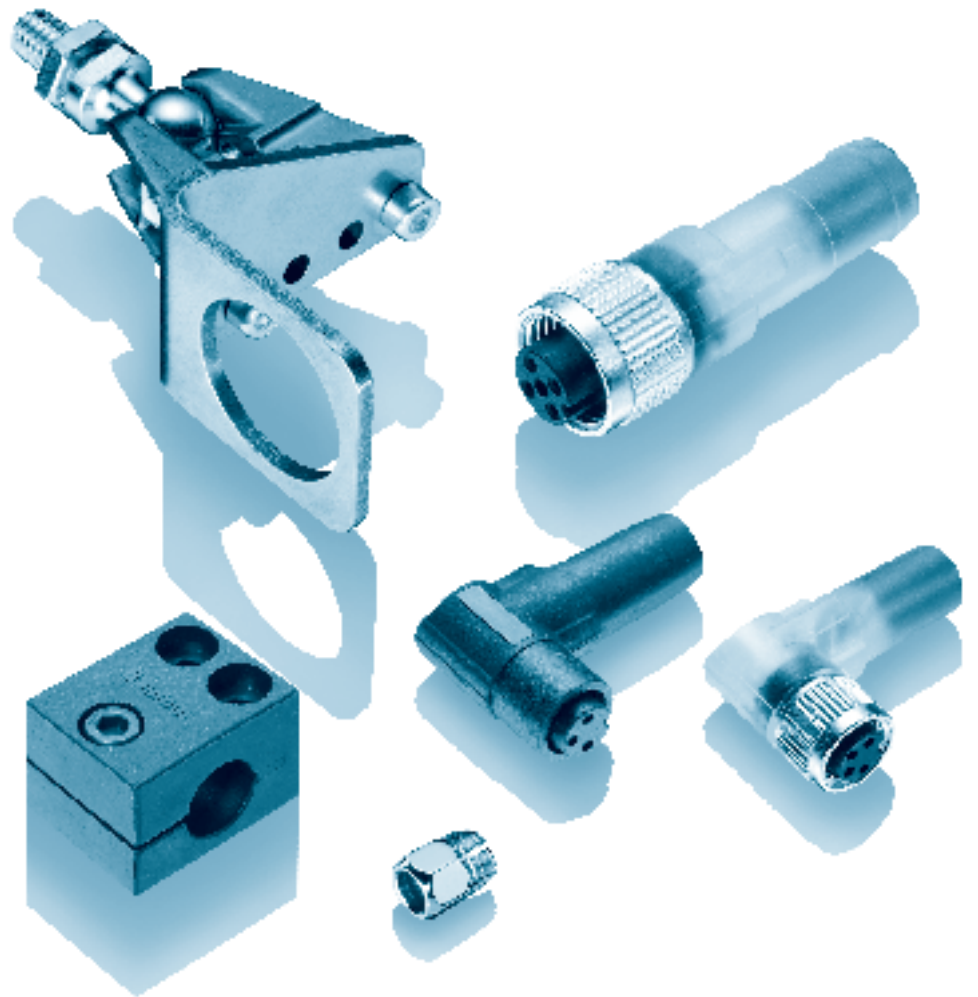
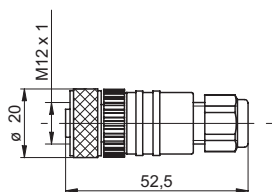




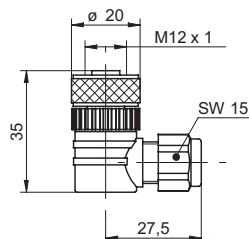
Accessories



ES 18 - Cable socket M12 straight, not pre-assembled**order reference**

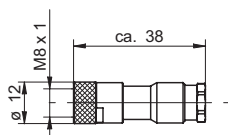
ES 18 PG7	Connector M12, 4 pin, straight
ES 18C PG7	Connector M12, 5 pin, straight

- Connector unshielded
- Connector only, no cable supplied
- 4 and 5 pin versions

ES 14 - Cable socket M12 angular, not pre-assembled**order reference**

ES 14 PG7	Connector M12, 4 pin, angular
ES 14C PG7	Connector M12, 5 pin, angular

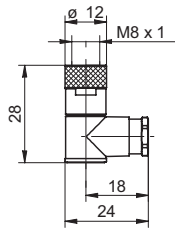
- Connector unshielded
- Connector only, no cable supplied
- 4 and 5 pin versions

ES 21 - Cable socket M8 straight, not pre-assembled**order reference**

ES 21	Connector M8, 3 pin, straight
ES 21A	Connector M8, 4 pin, straight

- Connector unshielded
- Connector only, no cable supplied
- 3 and 4 pin version

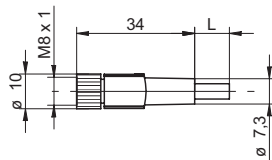
ES 22 - Cable socket M8 angular, not pre-assembled



order reference	
ES 22	Connector M8, 3 pin, angular
ES 22A	Connector M8, 4 pin, angular

- Connector unshielded
- Connector only, no cable supplied
- 3 and 4 pin versions

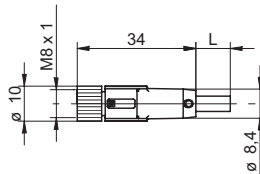
ESG 32 - Connector M8 straight



order reference	
ESG 32AH0200	Connector M8, 4 pin, straight, 2 m
ESG 32AH0500	Connector M8, 4 pin, straight, 5 m
ESG 32AH1000	Connector M8, 4 pin, straight, 10 m
ESG 32SH0200	Connector M8, 3 pin, straight, 2 m
ESG 32SH0500	Connector M8, 3 pin, straight, 5 m
ESG 32SH1000	Connector M8, 3 pin, straight, 10 m

- Connector unshielded
- 3 and 4 pin versions
- Cable coating PUR
- Halogen-free
- Suitable for flexible cable carriers
- UL listed, number E315836

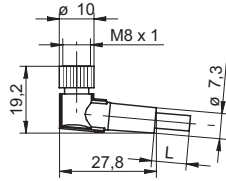
ESG 32G - Connector M8 straight, shielded



order reference	
ESG 32AH0200G	Connector M8, 4 pin, straight, 2 m, shielded
ESG 32AH0500G	Connector M8, 4 pin, straight, 5 m, shielded
ESG 32AH1000G	Connector M8, 4 pin, straight, 10 m, shielded
ESG 32SH0500G	Connector M8, 3 pin, straight, 5 m, shielded
ESG 32SH1000G	Connector M8, 3 pin, straight, 10 m, shielded

- Connector shielded, screen connected with cap nut
- 3 and 4 pin versions
- Cable coating PUR
- Halogen-free
- Suitable for flexible cable carriers
- UL listed, number E315836

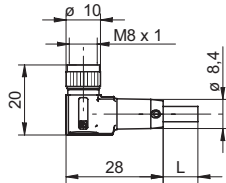
ESW 31 - Connector M8 angular



order reference	
ESW 31AH0200	Connector M8, 4 pin, angular, 2 m
ESW 31AH0500	Connector M8, 4 pin, angular, 5 m
ESW 31AH1000	Connector M8, 4 pin, angular, 10 m
ESW 31SH0200	Connector M8, 3 pin, angular, 2 m
ESW 31SH0500	Connector M8, 3 pin, angular, 5 m
ESW 31SH1000	Connector M8, 3 pin, angular, 10 m

- Connector unshielded
- 3 and 4 pin versions
- Cable coating PUR
- Halogen-free
- Suitable for flexible cable carriers
- UL listed, number E315836

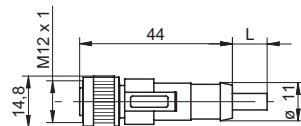
ESW 31G - Connector M8 angular, shielded



order reference	
ESW 31AH0200G	Connector M8, 4 pin, angular, 2 m, shielded
ESW 31AH0500G	Connector M8, 4 pin, angular, 5 m, shielded
ESW 31AH1000G	Connector M8, 4 pin, angular, 10 m, shielded
ESW 31SH0200G	Connector M8, 3 pin, angular, 2 m, shielded
ESW 31SH0500G	Connector M8, 3 pin, angular, 5 m, shielded

- Connector shielded, screen connected with cap nut
- 3 and 4 pin versions
- Cable coating PUR
- Halogen-free
- Suitable for flexible cable carriers
- UL listed, number E315836

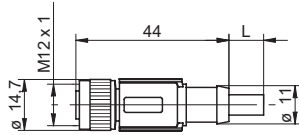
ESG 34 - Connector M12 straight



order reference	
ESG 34AH0200	Connector M12, 4 pin, straight, 2 m
ESG 34AH0500	Connector M12, 4 pin, straight, 5 m
ESG 34AH1000	Connector M12, 4 pin, straight, 10 m
ESG 34CH0200	Connector M12, 5 pin, straight, 2 m
ESG 34CH0500	Connector M12, 5 pin, straight, 5 m
ESG 34SH0200	Connector M12, 3 pin, straight, 2 m
ESG 34SH0500	Connector M12, 3 pin, straight, 5 m
ESG 34SH1000	Connector M12, 3 pin, straight, 10 m

- Connector unshielded
- 3, 4 and 5 pin versions
- Cable coating PUR
- Halogen-free
- Suitable for flexible cable carriers
- UL listed, number E315836

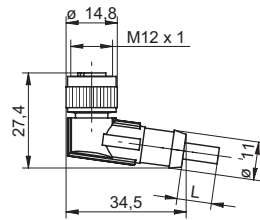
ESG 34G - Connector M12 straight, shielded



- Connector shielded, screen connected with cap nut
- 4, 5 and 8 pin versions
- Cable coating PUR
- Halogen-free
- Suitable for flexible cable carriers
- UL listed, number E315836

order reference	
ESG 34AH0200G	Connector M12, 4 pin, straight, 2 m, shielded
ESG 34AH0500G	Connector M12, 4 pin, straight, 5 m, shielded
ESG 34AH1000G	Connector M12, 4 pin, straight, 10 m, shielded
ESG 34CH0200G	Connector M12, 5 pin, straight, 2 m, shielded
ESG 34CH0500G	Connector M12, 5 pin, straight, 5 m, shielded
ESG 34CH1000G	Connector M12, 5 pin, straight, 10 m, shielded
ESG 34FH0200G	Connector M12, 8 pin, straight, 2 m, shielded
ESG 34FH0500G	Connector M12, 8 pin, straight, 5 m, shielded
ESG 34FH1000G	Connector M12, 8 pin, straight, 10 m, shielded

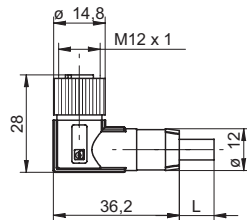
ESW 33 - Connector M12 angular



- Connector unshielded
- 3, 4 and 5 pin versions
- Cable coating PUR
- Halogen-free
- Suitable for flexible cable carriers
- UL listed, number E315836

order reference	
ESW 33AH0200	Connector M12, 4 pin, angular, 2 m
ESW 33AH0500	Connector M12, 4 pin, angular, 5 m
ESW 33AH1000	Connector M12, 4 pin, angular, 10 m
ESW 33CH0200	Connector M12, 5 pin, angular, 2 m
ESW 33CH0500	Connector M12, 5 pin, angular, 5 m
ESW 33SH0200	Connector M12, 3 pin, angular, 2 m
ESW 33SH0500	Connector M12, 3 pin, angular, 5 m
ESW 33SH1000	Connector M12, 3 pin, angular, 10 m

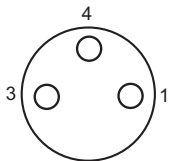
ESW 33G - Connector M12 angular, shielded



- Connector shielded, screen connected with cap nut
- 4, 5 and 8 pin versions
- Cable coating PUR
- Halogen-free
- Suitable for flexible cable carriers
- UL listed, number E315836

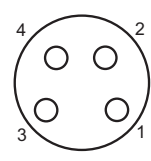
order reference	
ESW 33AH0200G	Connector M12, 4 pin, angular, 2 m, shielded
ESW 33AH0500G	Connector M12, 4 pin, angular, 5 m, shielded
ESW 33AH1000G	Connector M12, 4 pin, angular, 10 m, shielded
ESW 33CH0500G	Connector M12, 5 pin, angular, 5 m, shielded
ESW 33FH0200G	Connector M12, 8 pin, angular, 2 m, shielded
ESW 33FH0500G	Connector M12, 8 pin, angular, 5 m, shielded
ESW 33FH1000G	Connector M12, 8 pin, angular, 10 m, shielded

M8 3 pin



- 1 = BN
- 3 = BU
- 4 = BK

M8 4 pin

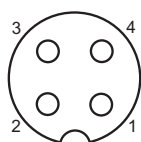


- 1 = BN
- 2 = WH
- 3 = BU
- 4 = BK

ES 21
ES 22
ESG 32S
ESW 31S

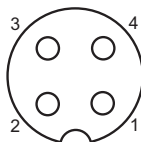
ES 21A
ES 22A
ESG 32A
ESW 31A

M12 3 pin



- 1 = BN
- 2 = n.c.
- 3 = BU
- 4 = WH

M12 4 pin

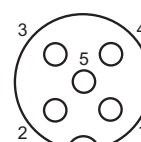


- 1 = BN
- 2 = WH
- 3 = BU
- 4 = BK

ESG 34S
ESW 33S

ES 14
ES 18
ES 21C
ES 22C
ESG 34A
ESW 33A

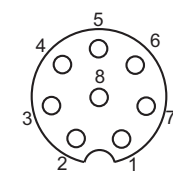
M12 5 pin



- 1 = BN
- 2 = WH
- 3 = BU
- 4 = BK
- 5 = GY

ES 14C
ES 18C
ESG 34C
ESW 33C

8 pin



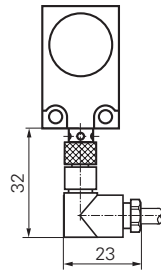
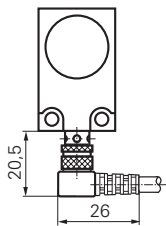
- 1 = WH
- 2 = BN
- 3 = GN
- 4 = YE
- 5 = GY
- 6 = PK
- 7 = BU
- 8 = RD

ESG 34G
ESW 33G

Connectors M8

Dimension 20

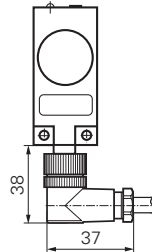
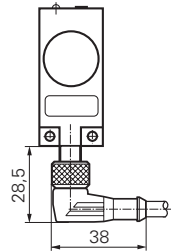
Dimension 20



Connectors M12

Dimension 30

Dimension 30



Test unit for sensors analog & digital



- Output via display (V or mA) or LED (PNP/NPN)
- Teach-in of sensors with integrated Teach- button
- Connection for plug in power supply (available as accessory)

Test- and configuration device for analog and digital PNP/NPN sensors with 18 VDC supply voltage

order reference
11084376 Test unit for sensors analog&digital

Test unit for sensors digital



- LED (red/green) for digital PNP/NPN signals
- Teach-in of sensors with integrated Teach- button
- Connection for plug in power supply (available as accessory)

Test- and configuration device for digital PNP/NPN sensors with 18 VDC supply voltage

order reference
11084377 Test unit for sensors digital

Power supply for sensor test unit

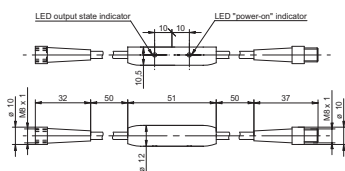


- Input 100-230 VAC
- Output 24 V/0,3 A
- Euro 2 pin plug connector

Protects the batteries of the sensor tester analog & digital for extended lifetime

order reference
11087165 Test unit for sensors

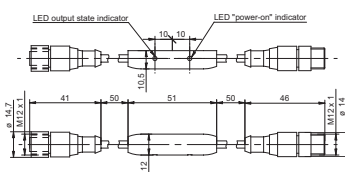
PNP to NPN Converter M8



- PNP/NPN Converter
- For frequencies up to max. 5 kHz
- For connector M8 - 3 pins

order reference
10161959 Converter PNP/NPN - M8 x 1

PNP to NPN Converter M12



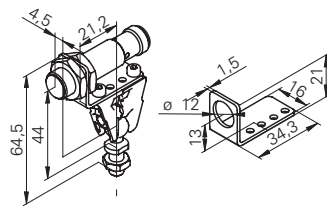
- PNP/NPN Converter
- For frequencies up to max. 5 kHz
- For connector M12 - 3 pins

order reference
10161958 Converter PNP/NPN - M12 x 1

Diverse

Accessories

Sensofix-Mounting kit for sensors series 12 round



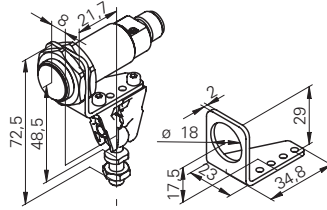
- Clamps made of stainless steel
- Ball pivots made of galvanized steel
- Mounting panel made of stainless steel

For use with all sensors in M12 housing

order reference

10151720 Sensofix series 12 round

Sensofix-Mounting kit for sensors series 18 round



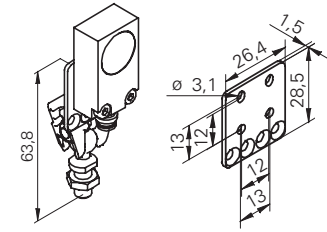
- Clamps made of stainless steel
- Ball pivots made of galvanized steel
- Mounting panel made of stainless steel

For use with all sensors in M18 housing

order reference

10151658 Sensofix series 18

Sensofix-Mounting kit for sensors series 18/20



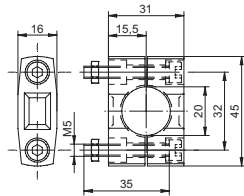
- Clamps made of stainless steel
- Ball pivots made of galvanized steel
- Mounting panel made of stainless steel

For use with inductive sensors series 18/20 in rectangular designs

order reference

10152385 Sensofix series 18/20 inductive rectangular

Mounting bracket 20 mm



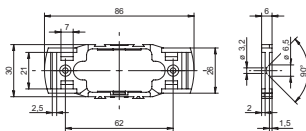
- Material: Polypropylene (PP)

For sensors with Ø 20 mm

order reference

10143377 Mounting bracket for sensors Ø 20 mm

Mounting kit for CFDK 25



order reference	
HC25-1	Mounting frame HC25-1 incl. accessories, optional Velcro strip order separately

- 1 pcs. mounting frame HC25; Material PA 12
- 2 pcs. cable ties 186x4,7 mm
- 2 pcs. adhesive pads
- 2 pcs. spacer

For use with CFDK 25

Velcro strip cut to length for mounting frame HC25



order reference	
BX 20-1200-1	Velcro strip cut to length 1200 mm
BX 20-2000-1	Velcro strip cut to length 2000 mm
BX 20-360-1	Velcro strip cut to length 360 mm
BX 20-4000-1	Velcro strip cut to length 4000 mm

- Base material: Polyamide
- Overall thickness: 1,8 to 2,2 mm
- Breaking strength: > 210 N/cm

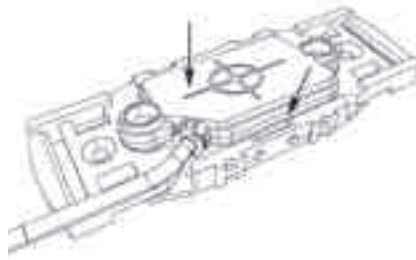
For use with mounting frame HC25

Snap-in without tools

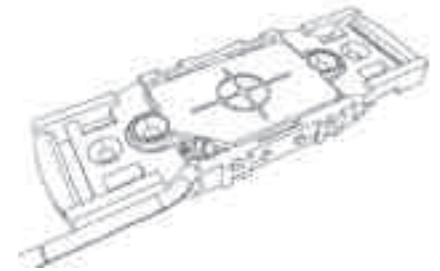
1. Fasten frame



2. Snap in sensor

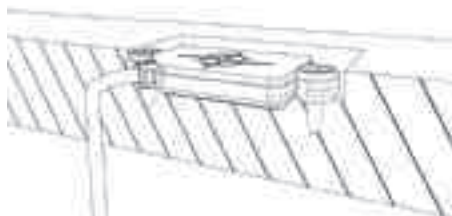


3. Done



Installation options

Flush with countersunk screws



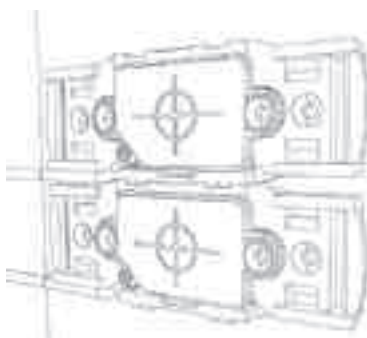
With cable ties



With Velcro



Cascaded installation



Fixing with glue or adhesive pads



With countersunk screws

