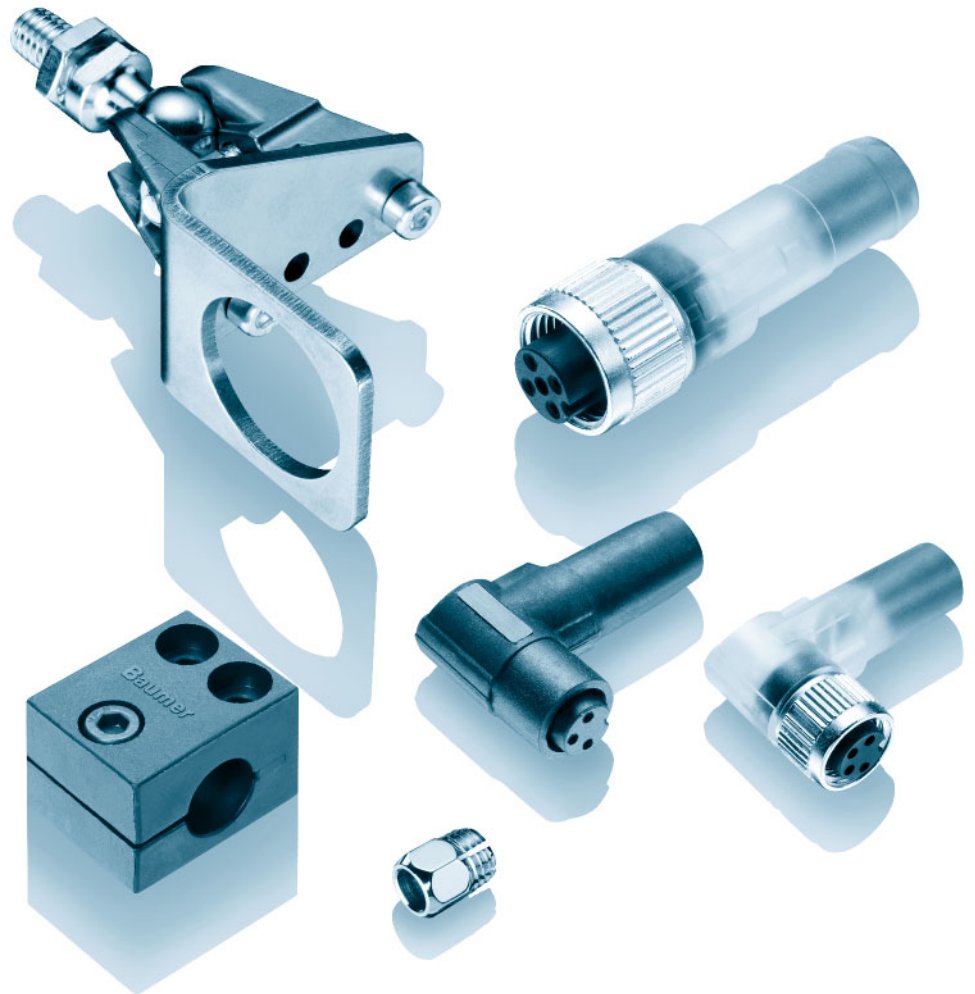




## Accessories



Connectors and mating connectors

Page 178

Connectors/Pin assignment

Page 186

Installation dimensions

Page 187

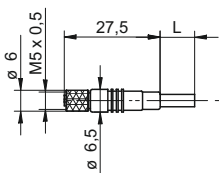
Mounting accessories

Page 188

Mounting kits *SENSOFIX*

Page 191

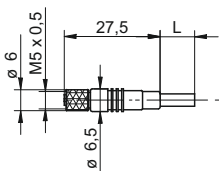
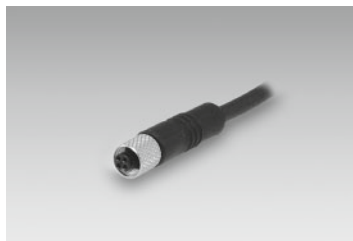
**ESG 05** - Connector M5 straight



order reference	
ESG 05SP0200	Connector M5, 3 pin, straight, 2 m
ESG 05SP0500	Connector M5, 3 pin, straight, 5 m
ESG 05SP1000	Connector M5, 3 pin, straight, 10 m

- Connector unshielded
- Miniature version
- Cable coating PUR

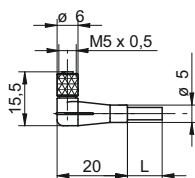
**ESG 05G** - Connector M5 straight, shielded



order reference	
ESG 05AP0200G	Connector M5, 4 pin, straight, 2 m, shielded

- Connector shielded
- Miniature version
- Cable coating PUR

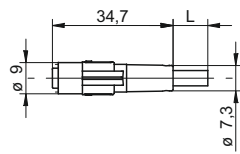
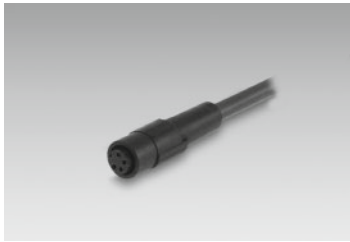
**ESW 05** - Connector M5 angular



order reference	
ESW 05SP0200	Connector M5, 3 pin, angular, 2 m
ESW 05SP0500	Connector M5, 3 pin, angular, 5 m

- Connector unshielded
- Miniature version
- Cable coating PUR

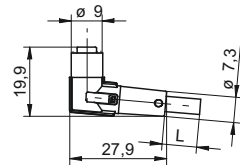
**ESG 09** - Connector Ø 8 mm straight, snap-in



order reference	
ESG 09SH0200	Connector clip fastener, 3 pin, straight, 2 m
ESG 09SH0500	Connector clip fastener, 3 pin, straight, 5 m
ESG 09SH1000	Connector clip fastener, 3 pin, straight, 10 m

- Connector unshielded "snap-in"
- 3 pin versions
- Cable coating PUR
- Halogen-free
- Suitable for flexible cable carriers
- UL listed, number E315836

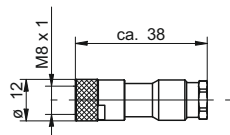
**ESW 08** - Connector Ø 8 mm angular, snap-in



order reference	
ESW 08SH0200	Connector clip fastener, 3 pin, straight, 2 m
ESW 08SH0500	Connector clip fastener, 3 pin, straight, 5 m

- Connector unshielded "snap-in"
- 3 pin versions
- Cable coating PUR
- Halogen-free
- Suitable for flexible cable carriers
- UL listed, number E315836

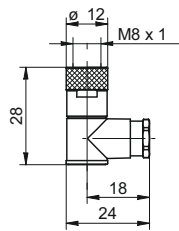
**ES 21** - Cable socket M8 straight, not pre-assembled



order reference	
ES 21	Connector M8, 3 pin, straight
ES 21A	Connector M8, 4 pin, straight

- Connector unshielded
- Connector only, no cable supplied
- 3 and 4 pin version

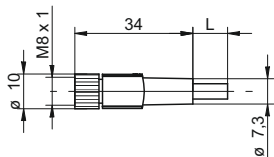
**ES 22** - Cable socket M8 angular, not pre-assembled



order reference	
ES 22	Connector M8, 3 pin, angular
ES 22A	Connector M8, 4 pin, angular

- Connector unshielded
- Connector only, no cable supplied
- 3 and 4 pin versions

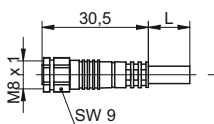
**ESG 32** - Connector M8 straight



order reference	
ESG 32AH0200	Connector M8, 4 pin, straight, 2 m
ESG 32AH0500	Connector M8, 4 pin, straight, 5 m
ESG 32AH1000	Connector M8, 4 pin, straight, 10 m
ESG 32SH0200	Connector M8, 3 pin, straight, 2 m
ESG 32SH0500	Connector M8, 3 pin, straight, 5 m
ESG 32SH1000	Connector M8, 3 pin, straight, 10 m

- Connector unshielded
- 3 and 4 pin versions
- Cable coating PUR
- Halogen-free
- Suitable for flexible cable carriers
- UL listed, number E315836

**ESG 32F** - Connector M8 straight, PVC/V4A



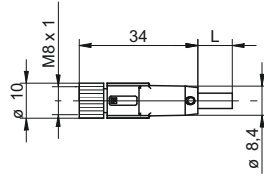
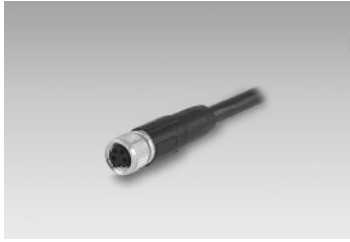
order reference	
ESG 32SF0500	Connector M8, 3 pin, straight, 5 m, V4A-PVC
ESG 32SF1000	Connector M8, 3 pin, straight, 10 m, V4A-PVC

- Connector unshielded
- 3 pin version
- Cable coating PVC
- Cap nut material in stainless steel V4A
- Suitable for flexible cable carriers

Connectors and mating connectors

Accessories

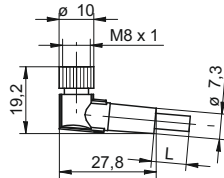
**ESG 32G** - Connector M8 straight, shielded



order reference	
ESG 32AH0200G	Connector M8, 4 pin, straight, 2 m, shielded
ESG 32AH0500G	Connector M8, 4 pin, straight, 5 m, shielded
ESG 32AH1000G	Connector M8, 4 pin, straight, 10 m, shielded
ESG 32SH0500G	Connector M8, 3 pin, straight, 5 m, shielded
ESG 32SH1000G	Connector M8, 3 pin, straight, 10 m, shielded

- Connector shielded, screen connected with cap nut
- 3 and 4 pin versions
- Cable coating PUR
- Halogen-free
- Suitable for flexible cable carriers
- UL listed, number E315836

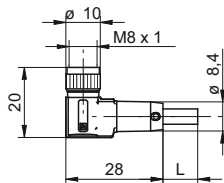
**ESW 31** - Connector M8 angular



order reference	
ESW 31AH0200	Connector M8, 4 pin, angular, 2 m
ESW 31AH0500	Connector M8, 4 pin, angular, 5 m
ESW 31AH1000	Connector M8, 4 pin, angular, 10 m
ESW 31SH0200	Connector M8, 3 pin, angular, 2 m
ESW 31SH0500	Connector M8, 3 pin, angular, 5 m
ESW 31SH1000	Connector M8, 3 pin, angular, 10 m

- Connector unshielded
- 3 and 4 pin versions
- Cable coating PUR
- Halogen-free
- Suitable for flexible cable carriers
- UL listed, number E315836

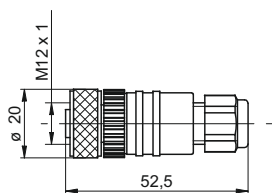
**ESW 31G** - Connector M8 angular, shielded



order reference	
ESW 31AH0200G	Connector M8, 4 pin, angular, 2 m, shielded
ESW 31AH0500G	Connector M8, 4 pin, angular, 5 m, shielded
ESW 31AH1000G	Connector M8, 4 pin, angular, 10 m, shielded
ESW 31SH0200G	Connector M8, 3 pin, angular, 2 m, shielded
ESW 31SH0500G	Connector M8, 3 pin, angular, 5 m, shielded

- Connector shielded, screen connected with cap nut
- 3 and 4 pin versions
- Cable coating PUR
- Halogen-free
- Suitable for flexible cable carriers
- UL listed, number E315836

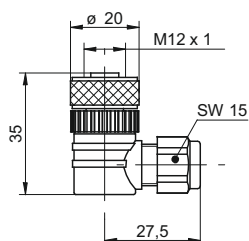
**ES 18 - Cable socket M12 straight, not pre-assembled**



order reference	
ES 18 PG7	Connector M12, 4 pin, straight
ES 18C PG7	Connector M12, 5 pin, straight

- Connector unshielded
- Connector only, no cable supplied
- 4 and 5 pin versions

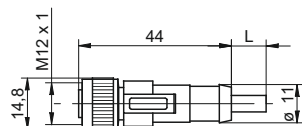
**ES 14 - Cable socket M12 angular, not pre-assembled**



order reference	
ES 14 PG7	Connector M12, 4 pin, angular
ES 14C PG7	Connector M12, 5 pin, angular

- Connector unshielded
- Connector only, no cable supplied
- 4 and 5 pin versions

**ESG 34 - Connector M12 straight**



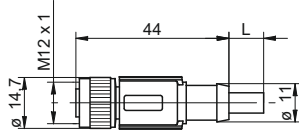
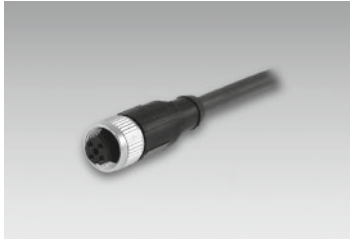
order reference	
ESG 34AH0200	Connector M12, 4 pin, straight, 2 m
ESG 34AH0500	Connector M12, 4 pin, straight, 5 m
ESG 34AH1000	Connector M12, 4 pin, straight, 10 m
ESG 34CH0200	Connector M12, 5 pin, straight, 2 m
ESG 34CH0500	Connector M12, 5 pin, straight, 5 m
ESG 34SH0200	Connector M12, 3 pin, straight, 2 m
ESG 34SH0500	Connector M12, 3 pin, straight, 5 m
ESG 34SH1000	Connector M12, 3 pin, straight, 10 m

- Connector unshielded
- 3, 4 and 5 pin versions
- Cable coating PUR
- Halogen-free
- Suitable for flexible cable carriers
- UL listed, number E315836

Connectors and mating connectors

Accessories

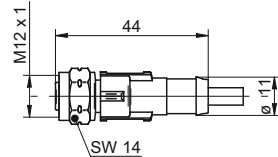
**ESG 34G** - Connector M12 straight, shielded



- Connector shielded, screen connected with cap nut
- 4, 5 and 8 pin versions
- Cable coating PUR
- Halogen-free
- Suitable for flexible cable carriers
- UL listed, number E315836

order reference	
ESG 34AH0200G	Connector M12, 4 pin, straight, 2 m, shielded
ESG 34AH0500G	Connector M12, 4 pin, straight, 5 m, shielded
ESG 34AH1000G	Connector M12, 4 pin, straight, 10 m, shielded
ESG 34CH0200G	Connector M12, 5 pin, straight, 2 m, shielded
ESG 34CH0500G	Connector M12, 5 pin, straight, 5 m, shielded
ESG 34CH1000G	Connector M12, 5 pin, straight, 10 m, shielded
ESG 34FH0200G	Connector M12, 8 pin, straight, 2 m, shielded
ESG 34FH0500G	Connector M12, 8 pin, straight, 5 m, shielded
ESG 34FH1000G	Connector M12, 8 pin, straight, 10 m, shielded

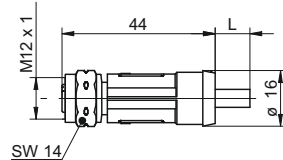
**ESG 34F** - Connector M12 straight, PVC/V4A



- Connector unshielded
- 4 pin version
- Cable coating PVC
- Cap nut material in stainless steel V4A
- Ecolab certified and FDA conform
- UL listed, number E315836

order reference	
ESG 34AF0200	Connector M12, 4 pin, straight, 2 m, V4A-PVC
ESG 34AF0500	Connector M12, 4 pin, straight, 5 m, V4A-PVC
ESG 34AF1000	Connector M12, 4 pin, straight, 10 m, V4A-PVC
ESG 34AF2500	Connector M12, 4 pin, straight, 25 m, V4A-PVC

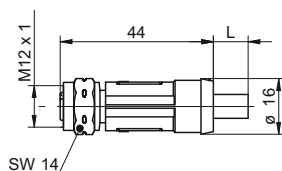
**ESG 34 (Outdoor)** - Connector M12 straight, PE-X cable



- For outdoor applications
- 4 pin versions unshielded
- Cable coating PE-X
- Halogen-free
- Cap nut material in high grade steel (1.4401)

order reference	
ESG 34AE0500	Connector M12, 4 pin, straight, 2 m
ESG 34AE1000	Connector M12, 4 pin, straight, 10 m

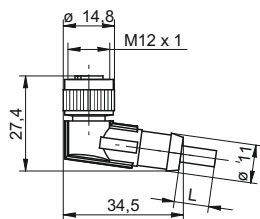
**ESG 34G (Outdoor)** - Connector M12 straight, 4 pin shielded; PE-X cable



order reference	
ESG 34AE0500G	Connector M12, 12 pin, straight, 5 m, shielded
ESG 34AE1000G	Connector M12, 12 pin, straight, 10 m, shielded

- For outdoor applications
- Cable coating PE-X
- Halogen-free
- Cap nut material in high grade steel (1.4401)

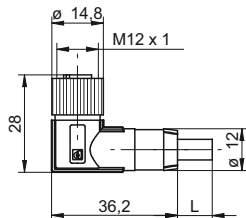
**ESW 33** - Connector M12 angular



order reference	
ESW 33AH0200	Connector M12, 4 pin, angular, 2 m
ESW 33AH0500	Connector M12, 4 pin, angular, 5 m
ESW 33AH1000	Connector M12, 4 pin, angular, 10 m
ESW 33CH0200	Connector M12, 5 pin, angular, 2 m
ESW 33CH0500	Connector M12, 5 pin, angular, 5 m
ESW 33SH0200	Connector M12, 3 pin, angular, 2 m
ESW 33SH0500	Connector M12, 3 pin, angular, 5 m
ESW 33SH1000	Connector M12, 3 pin, angular, 10 m

- Connector unshielded
- 3, 4 and 5 pin versions
- Cable coating PUR
- Halogen-free
- Suitable for flexible cable carriers
- UL listed, number E315836

**ESW 33G** - Connector M12 angular, shielded



order reference	
ESW 33AH0200G	Connector M12, 4 pin, angular, 2 m, shielded
ESW 33AH0500G	Connector M12, 4 pin, angular, 5 m, shielded
ESW 33AH1000G	Connector M12, 4 pin, angular, 10 m, shielded
ESW 33CH0500G	Connector M12, 5 pin, angular, 5 m, shielded
ESW 33FH0200G	Connector M12, 8 pin, angular, 2 m, shielded
ESW 33FH0500G	Connector M12, 8 pin, angular, 5 m, shielded
ESW 33FH1000G	Connector M12, 8 pin, angular, 10 m, shielded

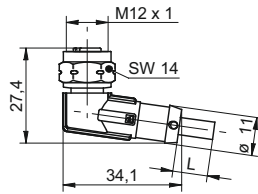
- Connector shielded, screen connected with cap nut
- 4, 5 and 8 pin versions
- Cable coating PUR
- Halogen-free
- Suitable for flexible cable carriers
- UL listed, number E315836

Connectors and mating connectors

Accessories



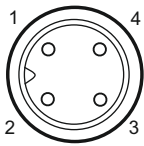
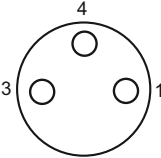
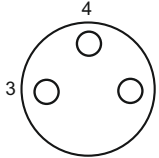
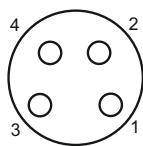
## ESW 33F - Connector M12 angular, PVC/V4A

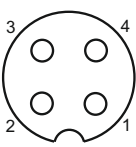
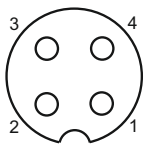
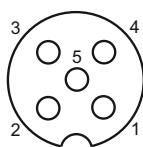


### order reference

ESW 33AF0200	Connector M12, 4 pin, angular, 2 m, V4A-PVC
ESW 33AF0500	Connector M12, 4 pin, angular, 5 m, V4A-PVC
ESW 33AF2500	Connector M12, 4 pin, angular, 25 m, V4A-PVC

- Connector unshielded
- 4 pin version
- Cable coating PVC
- Cap nut material in stainless steel V4A
- Ecolab certified and FDA conform
- UL listed, number E315836

M5 3 pin	Snap-in 3 pin	M8 3 pin	M8 4 pin
 <p>1 = BN 2 = n.c. 3 = BU 4 = BK</p>	 <p>1 = BN 3 = BU 4 = BK</p>	 <p>1 = BN 3 = BU 4 = BK</p>	 <p>1 = BN 2 = WH 3 = BU 4 = BK</p>
<p>ESG 05 ESW 05</p>	<p>ESG 09 ESW 08</p>	<p>ES 21 ES 22 ESG 32S ESW 31S</p>	<p>ES 21A ES 22A ESG 32A ESG 32G ESW 31A ESW 31G</p>

M12 3 pin	M12 4 pin	M12 5 pin
 <p>1 = BN 2 = n.c. 3 = BU 4 = WH</p>	 <p>1 = BN (+Vs) 2 = WH (output) 3 = BU (0V) 4 = BK (output)</p>	 <p>1 = BN 2 = WH 3 = BU 4 = BK 5 = GY</p>
<p>ESG 34S ESW 33S</p>	<p>ES 14 ES 18 ESG 34A ESG 34AF ESG 34 (Outdoor) ESW 33A ESW 33AF</p>	<p>ES 14C ES 18C ESG 34C ESW 33C</p>

**Note**

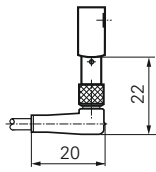
**Halogen-free cables**

Sheath material	PUR black gray
Special properties	suitable for drag chains silicone-free free from substances that might impair surface wetting in the coating process
Free of halogens	according to DIN VDE 0472 part 815
Flame resistance	according to UL-Style 20549
Oil resistance	according to DIN VDE 60811-2-1

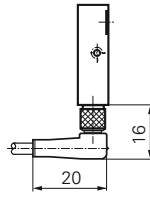
# Installation dimensions

## Connectors M5

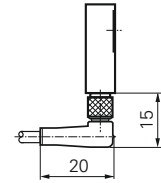
Dimension 06



Dimension 08

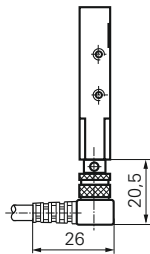


Dimension 12

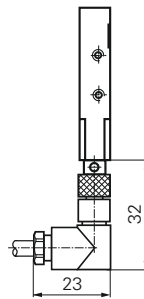


## Connectors M8

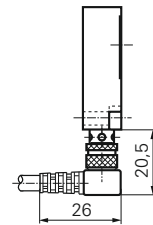
Dimension 08



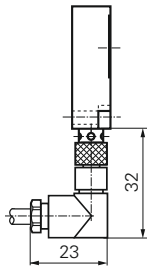
Dimension 08



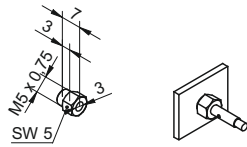
Dimension 20



Dimension 20



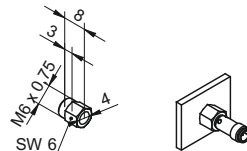
Clamping nut for sensors Ø 3 mm



order reference

10137021 Clamping nut for sensors Ø 3 mm

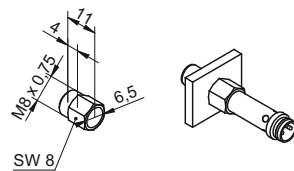
Clamping nut for sensors Ø 4 mm



order reference

10119345 Clamping nut for sensors Ø 4 mm

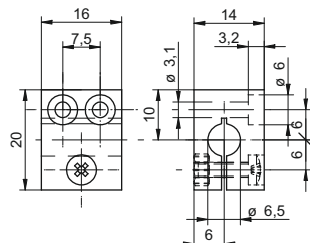
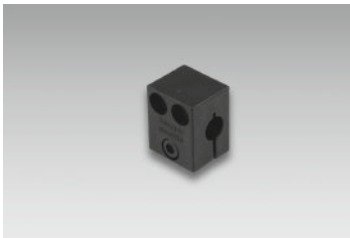
Clamping nut for sensors Ø 6,5 mm



order reference

10117742 Clamping nut for sensors Ø 6,5 mm

Mounting bracket 6,5 mm



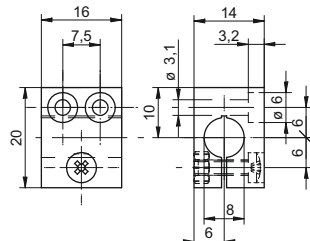
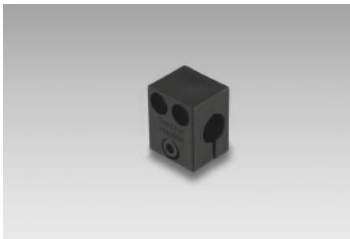
- Material: Plastic (PA6)

For sensors with Ø 6,5 mm

order reference

10109474 Mounting bracket for sensors Ø 6,5 mm

Mounting bracket 8 mm



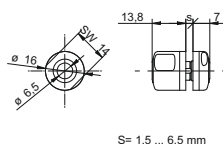
- Material: Plastic (PA6)

For sensors with Ø 8 mm

order reference

10109475 Mounting bracket for sensors Ø 8 mm

Mounting HI06-1H for sensors in hygienic design Ø 6,5 mm



- Material: Stainless steel V4A

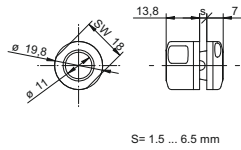
- EHEDG-certified

For use with inductive sensors 6,5 mm

order reference

HI06-1H Mounting for sensors in hygienic design Ø 6,5 mm

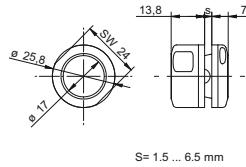
Mounting HI11-1H for sensors in hygienic design Ø 11 mm



- Material: Stainless steel V4A
  - EHEDG-certified
- For use with inductive sensors 11 mm

**order reference**  
HI11-1H Mounting for sensors in hygienic design Ø 11 mm

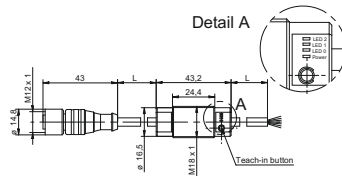
Mounting HI17-1H for sensors in hygienic design Ø 17 mm



- Material: Stainless steel V4A
  - EHEDG-certified
- For use with inductive sensors 17 mm and photoelectric sensors in hygienic design

**order reference**  
HI17-1H Mounting for sensors in hygienic design Ø 17 mm

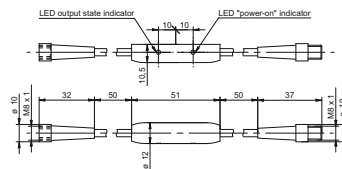
Converter 3-point



- Converter with three teachable outputs
- For use with all distance measuring inductive and ultrasonic sensors

**order reference**  
10163979 Converter 3-point (M12)

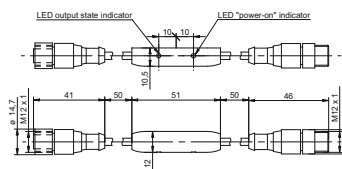
PNP to NPN Converter M8



- PNP/NPN Converter
- For frequencies up to max. 5 kHz
- For connector M8 - 3 pins

**order reference**  
10161959 Converter PNP/NPN - M8 x 1

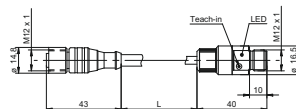
PNP to NPN Converter M12



- PNP/NPN Converter
- For frequencies up to max. 5 kHz
- For connector M12 - 3 pins

**order reference**  
10161958 Converter PNP/NPN - M12 x 1

Teach-in Adapter M12



**order reference**  
10141584 Teach-in Adapter M12

**Test unit for sensors analog & digital**

- Output via display (V or mA) or LED (PNP/NPN)
- Teach-in of sensors with integrated Teach- button
- Connection for plug in power supply (available as accessory)

Test- and configuration device for analog and digital PNP/NPN sensors with 18 VDC supply voltage

**order reference**

11084376 Test unit for sensors analog & digital

**Test unit for sensors digital**

- LED (red/green) for digital PNP/NPN signals
- Teach-in of sensors with integrated Teach- button
- Connection for plug in power supply (available as accessory)

Test- and configuration device for digital PNP/NPN sensors with 18 VDC supply voltage

**order reference**

11084377 Test unit for sensors digital

**Power supply for sensor test unit**

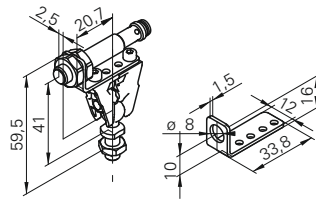
- Input 100-230 VAC
- Output 24 V/0,3 A
- Euro 2 pin plug connector

Protects the batteries of the sensor tester analog & digital for extended lifetime

**order reference**

11087165 Test unit for sensors

**Sensofix-Mounting kit for sensors series 08 round**



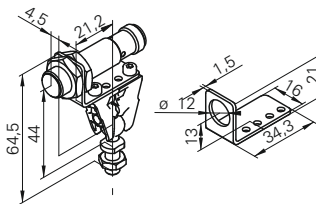
- Clamps made of stainless steel
- Ball pivots made of galvanized steel
- Mounting panel made of stainless steel

For use with all sensors in M8 housing

**order reference**

10151719 Sensofix series 08

**Sensofix-Mounting kit for sensors series 12 round**



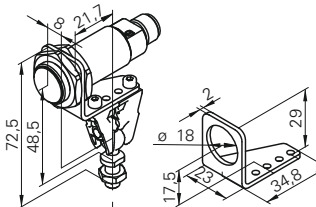
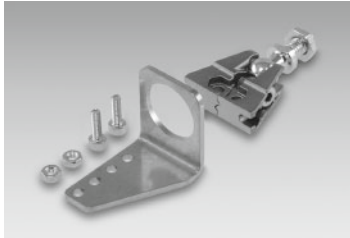
- Clamps made of stainless steel
- Ball pivots made of galvanized steel
- Mounting panel made of stainless steel

For use with all sensors in M12 housing

**order reference**

10151720 Sensofix series 12 round

**Sensofix-Mounting kit for sensors series 18 round**



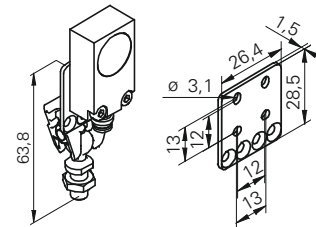
- Clamps made of stainless steel
- Ball pivots made of galvanized steel
- Mounting panel made of stainless steel

For use with all sensors in M18 housing

**order reference**

10151658 Sensofix series 18

**Sensofix-Mounting kit for sensors series 18/20**



- Clamps made of stainless steel
- Ball pivots made of galvanized steel
- Mounting panel made of stainless steel

For use with inductive sensors series 18/20 in rectangular designs

**order reference**

10152385 Sensofix series 18/20 inductive rectangular